

Redwood Sports Car Club  
Post Office Box 478  
Eureka, CA 95502  
[www.rscc.net](http://www.rscc.net)

# 2013 Hoopa Hillclimb



July 27 - 28

Brought to you by

The  
Redwood Sports Car Club

Sanctioned by the  
Northwest Hillclimb  
Association

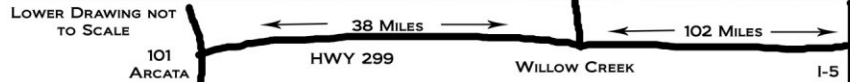
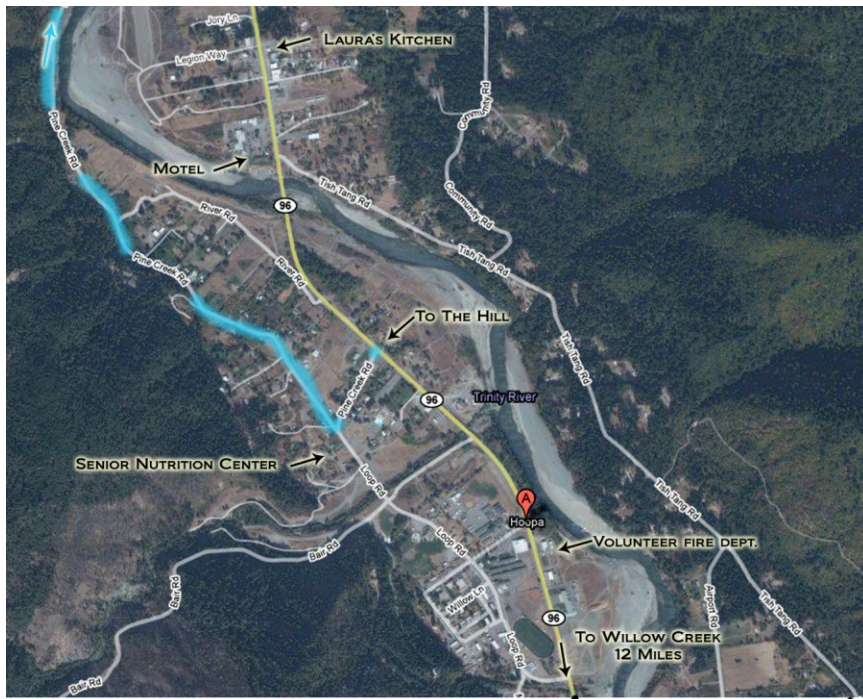


Thanks to  
The Hoopa Valley Indian Reservation  
Tribal Council and Residents

# Welcome to Hoopa 2013!

The Redwood Sports Car Club and people of the Hoopa Valley Indian Reservation welcome all fellow Hillclimbers to come on July 27th & 28th to enjoy the 25th running of the Hoopa Hillclimb in the beautiful Hoopa Valley.

I would like to say thank you to Laura Ferris, who owns Laura's Kitchen. She has finally sold the restaurant and is enjoying retirement. I bet she is not going to miss all those bag lunches! Thank you so much for all the years that you have helped us keep this thing going. -Tina



## 2012 Results

CLASS	OVERALL	BEST	DRIVER	LAST NAME	CAR	Trophy	RECORD
ASR	6	222.62	Greg	McNair	Dune Buggy	1st in Class	-
ASR	14	228.02	Paula	McNair	Dune Buggy	Queen of the Hill 2nd in Class	-
ASR	44	301.21	Gary	Ratliff	1968 VW Buggy		-
BS	16	230.49	Brent	Blakely	2004 Subaru STI	1st in Class	NEW
CS	32	246.99	Lee	Sutton	1999 Mazda Miata	1st in Class	-
CS	43	259.61	Jiro	Tulley	2000 Mazda Miata		-
CSP	24	236.83	Ron	Ronchetto	2000 Mazda Miata	1st in Class	-
CSP	25	236.89	Dave	Turney	1987 Mazda RX7		-
DSP	21	234.97	Lynn	Miller	2006 Chevy Cobalt TSS		-
EP	29	241.54	Doug	Batt	1995 Mazda Miata	1st in Class	NEW
EP	33	247.48	Bob	Fisher	1973 Datsun 240Z	2nd in Class	-
EP	37	249.60	Scott	Knauf	1992 BMW 318is		-
ES	38	249.92	Hal	Gjermann	1971 Datsun 240Z 2.4	1st in Class	-
ESP	9	224.42	Jeff	Thompson	2005 Ford Mustang GT	1st in Class	NEW
ESP	35	248.86	Arthur	Jones	2010 Chevy Camaro		-
FC	5	220.89	William	Cosby	Swift	1st in Class	-
FP	36	248.90	Bob	Sherman	1970 MGB GT	1st in Class	-
FP	41	254.92	Marie	Sherman	1970 MGB GT		-
FS	45	325.18	Susan	Leong	2006 Ford Mustang	1st in Class	-
GS	23	236.39	Mike	Hendriks	2012 Honda Civic Si	1st in Class	NEW
GS	42	257.03	Steven	Fatland	1995 Honda Del Sol		-
GT1	17	230.50	Brian	Bogdon	08 Ford Mustang FR500S	1st in Class	-
GT2	22	235.58	Mary Jane	Hopkinson	1967 Porsche 911	Millie Award 1st in Class	-
HCP	1	206.77	Dave	Kipperman	2010 Locost 2 Special	King of the Hill 1st in Class	NEW
HS	46	327.16	Doug	Milota	1967 MGB	1st in Class	-
OSPO	4	218.39	Grant	Keyser	2010 Nissan 370Z	1st in Class	-
OSPO	10	225.42	Oliver	Taylor	1991 Ford Mustang	2nd in Class	-
OSPO	20	233.82	Tina	Johnson	2004 Subaru STI		-
OSPO	27	241.19	Charley	Birimisa	1989 Ford Mustang		-
OSPO	28	241.53	Silas	Boden	1987 Chevy El Camino		-
OSPU	30	241.86	Loren	Fisher	1973 MGBenz	1st in Class	-
OSPU	34	248.34	Bob	Blick	1997 Mazda Miata	2nd in Class	-
OSPU	40	251.72	John	Schliemann	1995 Mazda Miata		-
SM	31	245.43	Gaydon	Rosales	2006 Subaru STI	1st in Class	-
SMF	12	227.08	Noel	De Los Reyes	Acura Integra Type R 2.9	1st in Class	NEW
SMF	13	227.35	Jaime	Mendoza	Acura Integra Type R 2.9		-
SPU	11	225.67	Thomas	Berndt	1987 Toyota MR2	1st in Class	-
SS	3	215.42	Robert	Rousseau	07 Chevy Corvette 5.45	1st in Class	NEW
SSM	7	223.19	Craig	Lamothe	1972 Datsun 240Z	1st in Class	NEW
SSM	15	228.86	Ian	Sharp	1987 Mazda RX7 TII		-
SSP	2	213.86	Robert	Boynton	2002 Porsche GT2	1st in Class	NEW
SSP	8	223.33	Guy	Southern	1999 Chevy Corvette		-
STR	39	251.22	Jesse	Dejager	RX7	1st in Class	NEW
STU	18	230.83	Jack	Van Wattering	2010 Subaru STI	1st in Class	NEW
STU	19	232.93	Larry	Notheis	2005 Subaru STI	2nd in Class	-
STU	26	238.58	Alex	Gower	2002 Subaru WRX		-

Note: Times are in minutes and seconds, ie 206.77 = 2:06.77  
For full list of Hoopa Hillclimb records, see [www.rsc.net](http://www.rsc.net)

## SCHEDULE OF EVENTS

### Thursday, July 25

**6:00 pm - 7:30 pm** Tech Inspection for Humboldt area cars and helmets at:  
Leon's Car Care Center 929 Broadway, Eureka.  
Please, Humboldt area cars must be teched at this time

### Friday, July 26 (last chance to order lunches for both days)

**4:00 pm - 8:00 pm Tech Inspection** at the Hoopa Volunteer Fire Department  
*Valley Cafe will stay open until 9:00 pm for dinner*  
**8:30 pm Drivers School** to follow Tech at the Tsewenaldin Inn Motel in Hoopa  
All newcomers to the hill are required to attend

### Saturday, July 27

**LIMITED tech time! \$10.00 late fee**  
**6:00 am** Valley Cafe opens for breakfast  
**7:00 am** Meet at the hill for setup. Be on time!  
**8:00 am - 8:20 am** Limited late registration and tech  
**8:30 am** Mandatory driver & worker meeting  
**10:15 am - 3:00 pm-ish** Timed runs  
(note: Valley Cafe delivers bag lunches on both days but only if you order at tech Thursday or Friday or with entry form)  
**6:00 pm** Tri-Tip dinner and social at the Tsewenaldin Inn, free for 2-day drivers, others \$18.00, so don't miss it!

### Sunday, July 22

**6:00 am** Valley Cafe opens for breakfast  
**7:30 am** Meet at the hill for setup. Be on time!  
**8:45 am** Mandatory driver & worker meeting  
**10:15 am - 3:00 pm-ish** Timed runs  
**4:00 pm - 5:00 pm** Awards Ceremony at Tsewenaldin Inn as soon we clean up the hill and get the trophies figured out. The more help we get, the faster it goes. Also, Valley Cafe will be open from 3:00 to 5:00 if anyone wants a hot meal.

## THANK YOU TO OUR SPONSORS!

Arcata Used Tire & Wheels  
Buddy's Auto Center  
B & B Portable Toilets  
California Conservation Corps-Fortuna Campus  
Eureka-Humboldt Fire Extinguisher  
Garberville Sign Co.  
German Motors of Arcata  
Hoopa Tribal Council  
Hubbard's German Auto  
J and J Real Estate  
Frank Jorge Excavating  
Leon's Car Care Center  
Lost Coast Motorsports  
RWS Services  
Wally's Engine Shop

\*\*\*\*\*

VALLEY CAFE is available to make lunches for us. Please mail in your orders with your entry form or turn in at tech on Thursday or Friday at the latest. If you want to feed your hungry crew, this is the simplest way in Hoopa!

Cost is \$8.00 per lunch.

## LEON'S CAR CARE CENTER

929 Broadway, Eureka 707 444-9636

Sponsor of the "KING OF THE HILL" trophy

1986	Doug Pulver	FF	2:17.15
1987	Doug Pulver	FA	2:11.41
1988	Mike Rickman	FA	2:12.70
1989	Terry Hinesley	FC	2:16.09
1990	Terry Hinesley	FC	2:15.98
1991	Mike Rickman	FA	2:10.61
1992	Mike Rickman	FA	2:09.98
1993	James Mueller	FC	2:12.12
1994	James Mueller	F Libre	2:18.30
1995	Bert Curtis	CSR	2:22.34
1996	Wilke Myers III	ASR	2:19.08
1997	Barry Goldine	F Libre	2:04.10
1998	Mike Lella	FA	2:07.21
1999	Kenny Richins	FA	2:11.59
2000	Dave Heppler	GT1	2:18.97
2001	Dave Heppler	GT1	2:18.31
2002	Dave Heppler	GT1	2:15.75
2003	Jeff Glorioso	ASP	2:20.99
2005	Dave Kipperman	GT3	2:26.99
2006	Dave Kipperman	OSP-O	2:18.48
2007	Dave Kipperman	SPO	2:16.32
2008	Sonny Smith	SPO	2:13.01
2009	Sonny Smith	SPO	2:15.03
2012	Dave Kipperman	HCP	2:06.77

## GERMAN MOTORS OF ARCATA

1065 K Street, Arcata 707 822-7265

Sponsor of the "QUEEN OF THE HILL" trophy

1986	Louise Pulver	FF	2:39.19
1987	Jan Grove	SP	2:28.03
1988	Bonnie Mueller	FA	2:26.23
1989	Cari Hinesley	FC	2:26.46
1990	Cari Hinesley	FC	2:20.37
1991	Fay Curtis	FF	2:41.48
1992	Bonnie Mueller	FA	2:20.91
1993	Bonnie Mueller	FC	2:15.85
1994	Bonnie Mueller	F Libre	2:17.28
1995	Merlene Fletcher	FA	2:30.25
1996	Merlene Fletcher	FA	2:20.15
1997	Marcy Myers	ASR	2:30.54
1998	Marcy Myers	ASR	2:28.88
1999	Susan Hagaman	FL	2:15.09
2000	Mary Lynn Risley	GT1	2:26.70
2001	Marcy Myers	ASR	2:25.81
2002	Marcy Myers	ASR	2:29.77
2003	Pam Kannan	GT4	2:33.04
2005	Peggy Hale	ITS	2:42.04
2006	Peggy Hale	OSP-O	2:35.28
2007	Tina Johnson	CSP	2:41.67
2008	Paula McNair	ASR	2:25.84
2009	Paula McNair	ASR	2:27.70
2012	Paula McNair	ASR	2:28.02

## HUBBARDS GERMAN AUTO

235 West Grant Street, Eureka 707 443-4496

Sponsor of the

"Fred Champion Memorial Traveling Award"

(honoring workers)

1991 Kathie Pomeroy	1992 Fay Curtis
1993 Al Fatland	1994 Loren Fisher
1995 George & Lois Ott	1996 Dennis & Peggy Hale
1997 Christine Gates	1998 Jim Hussey
1999 Terry Jones	2000 Willy Cosby
2001 Steven Peach	2002 Keith & Jenessa Lund
2003 Doug Pulver	2005 Terry Jones
2006 Claire Turney	2007 Jake LaMothe
2008 Melanie Thompson	2009 Jesus Quinonez
2012 Marvin Goss	

## California Conservation Corps- Fortuna Campus

Sponsor of the

"Millie Warrick Memorial Award"

1997 Jan Grove	SPO	2:35.00
1998 Jennifer Loveday	FF	2:29.49
1999 Marcy Myers	ASR	2:26.19
2000 Tina Johnson	HS	3:15.38
2001 Peggy Hale	ITS	2:38.63
2002 Tina Johnson	HS	3:07.61
2003 Peggy Hale	GTS	2:39.67
2005 Tina Johnson	OSP-U	2:59.11
2006 Tina Johnson	CSP	2:43.50
2007 Peggy Hale	GT3	2:44.81
2008 Tina Johnson	CSP	2:41.43
2009 Tina Johnson	CSP	2:41.06
2012 Mary Jane Hopkinson	CSP	2:35.58

**CAUTION:** Hillclimbing is definitely not for beginning drivers, consequently, the RSCC reserves the right to refuse any participant. The Hill is fun to drive as well as being difficult to master at speed, so caution is most definitely recommended for those who have never seen the Hill. **A MANDATORY Drivers School for first-time Hillclimbers will be held Friday evening after Tech** - see the schedule for location & time.

**NO IMPROMPTU PRACTICE:** There will be absolutely NO "practices" on the Hill at anytime. We could lose our site for violation. Violations of this rule will result in immediate disqualification with no refund. The hill may be driven in street legal cars, following all traffic laws, prior to 7:00 am each day.

**TECH:** Expect a rigorous, off-trailer session. Any car which goes "off-course" during a run will be expected to be re-teched before it is allowed to run again. Battery hold-downs must be either of the stock type or a solid metal clamping device. Elastic cords are not acceptable. Tires that will be used on the Hill must be at tech for inspection. Any alteration made to the car after tech must be cleared with the tech inspector. No open holes are allowed in the bulkheads between the engine and the driver or between the fuel tank and the driver. Helmets and drivers licenses will be checked at this time.

**A MANDATORY drivers meeting** will be held each morning. Failure to attend will be considered grounds for disqualification or forfeiture of your first run.

**WORKERS:** All drivers will work or provide one worker per car driven on the day(s) you participate in this event. We will need corner workers and you can expect to be called upon to help.

**RELEASE WAIVERS:** All participants, pit crews, spectators, etc., must sign the insurance release form.

**CAR NUMBERS & PITS:** These will be assigned on a first come-first served basis and verified by email or phone call. Other info, rules, etc. will be provided at the event and will take precedent over any other printed material. Car numbers must be visible from both sides of the car, no exceptions.

**MUFFLERS:** Spark arrestor type mufflers are required.

**AWARDS** will be given on the following basis:

\*2 to 4 cars in a class - 1 award

5 to 8 cars in a class - 2 awards

9 or more cars in a class - 3 awards

\*If a competitor creates a new hill record and is the only driver in that class then an award will be presented.



Just in case you need towing or tire repair while at the Hoopa Hillclimb:

Buddy's Auto Center  
39421 HWY 299  
Willow Creek, CA 95573  
530 629-2424

**FOOD:** There will be snacks & drinks available for sale at the hill. Valley Cafe will be making bag lunches and delivering them to us on Saturday and Sunday, but only if you place your order by Friday, at the latest. Local businesses are a big part of why we are able to keep the Hillclimb, so please support them. There will be an awesome Tri-tip dinner with all the fixins on Saturday night at the motel. Included for two-day drivers, \$18 for everybody else.

Sorry "No Credit Cards", cash or checks only.

**RUNS:** Two runs per day per driver. More runs available if time allows.

**REFUNDS:** Refunds will be available only at the Registrar's discretion and requests must be received by the end of Friday's tech inspection.

**DRIVERS** must wear a helmet which must be an approved Snell 2000 or newer. Drivers must wear shoes, long sleeved shirts and long pants, made of cotton or Nomex, while on their runs. Drivers Suits are strongly recommended. Always buy the best safety equipment that you can afford.

**SAFETY EQUIPMENT:** Shoulder harnesses and/or cross chest harnesses are mandatory. All open cars must have roll bars that are above the drivers helmet, adequately braced, and be constructed to S.C.C.A. GCR specifications. GCR reg.18.1.2 states - Forward braces and portions of the main hoop subject to contact by the driver's helmet shall be padded with non-resilient material such as Ethafoam or Ensolite or other similar material with a minimum thickness of one-half inch. Integrated roll bars, such as Corvette & Porsche "Targas", etc. are acceptable. The driver's side window must be rolled up, or a window net or arm restraints used. ROAD RACE CARS: GCR ROLL BARS are required. Arm restraints strongly recommended in all open-top cars.

**FIRE EXTINGUISHERS** or fire systems are mandatory in all cars. They must be mounted using a metal bracket, be within easy reach of the driver or a safety official, and must be a minimum 5BC rating. They must be professionally tested and tagged within 13 months of the event.

**FULL RULES AT:** <http://nhahillclimb.org/2013-NHA-rules.html>

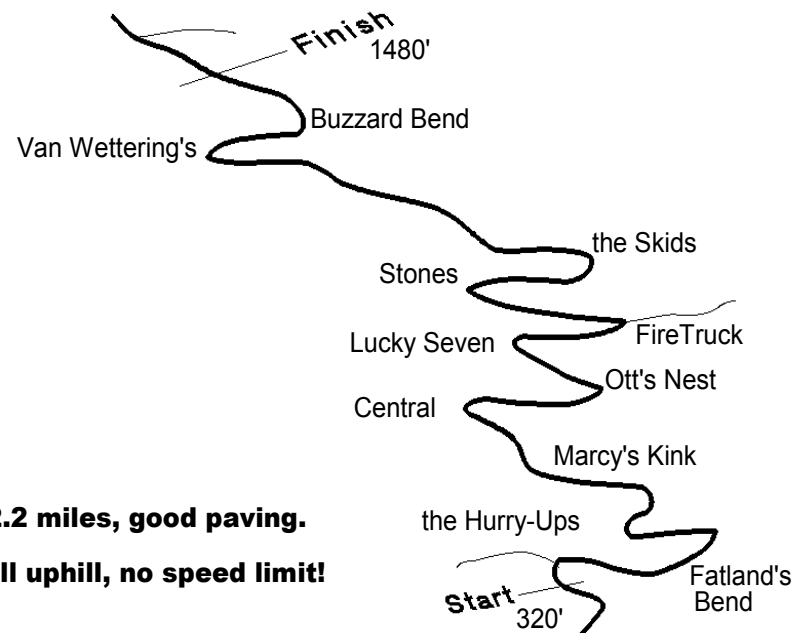
# THE BUSINESSES AND PEOPLE OF THE HOOPA VALLEY WELCOME YOU!

76 Station & Mini-Mart  
 Assembly of God Church  
 Big Hill Laundromat  
 Blessed Kateri Church  
 Burger Barn  
 Church of the Mountains  
 Coast Central Credit Union  
 Country Chapel  
 First Baptist Church  
 Fish-on  
 Helping Our Pets and Strays  
 Hoopa Volunteer Fire Department  
 Hoopa Forest Industries  
 Hoopa Modular Building Enterprise  
 Hoopa Tribal Museum  
 Hoopa Valley Tribal Council  
 Hoopa Valley Aggregates & RediMix  
 Joe's Deli  
 Jury's Nursery & Gifts  
 KIDE 91.3 FM Public Radio  
 Lucky Bear Casino  
 Maloney's Hay & Grain  
 New Life Church  
 Office FX  
 Pectah Church  
 Q:osos Network  
 Ray's Food Place  
 Senior Nutrition Center  
 The Tent Man  
 Thunderbird International  
 Tribal Police  
 Tsewena Tree Nursery  
 Tsewena Inn  
 Two Rivers Tribune  
 Valley Cafe  
 Wanda's Computer World  
 Wildland Fire Department

Tribal Council Chairman: Leonard Masten Jr.

Council members: Margaret "Maggie" Dickson, Hayley Hutt, Ryan Jackson, Diane McCovey-Ferris, Augustine Montgomery, Byron Nelson Jr.

**on the web at: [www.hoopa-nsn.gov](http://www.hoopa-nsn.gov)**



Redwood Sports Car Club  
[www.rsc.net](http://www.rsc.net)

## Hoopa Hillclimb Event Officials:

Chairman: Tina Johnson 707 923-4121 home 707 845-2207 cell  
 ilovemybetty@yahoo.com

Safety Coordinator: Doug Batt 707 326-0200  
 dbattspot@sbcglobal.net

Webmaster: Doug Pulver 707 845-8731 [dougpulver@rsc.net](mailto:dougpulver@rsc.net)

Send entry forms to: RSCC PO Box 478 Eureka, CA 95502

## WHERE TO STAY:

Tsewena Inn - Hoopa <a href="http://www.hoopa-nsn.gov/enterprises/hotel.htm">www.hoopa-nsn.gov/enterprises/hotel.htm</a>	530 625-4294
Coho Cottages - Willow Creek <a href="http://www.cohocottages.com">www.cohocottages.com</a>	800 672-1511
Bigfoot Motel - Willow Creek <a href="http://www.bigfootmotel.com">www.bigfootmotel.com</a>	530 629-2142
Gambi Hill Motel - Willow Creek	530 629-2701
Riverside RV Park - Orleans (18 miles)	530 627-3239

Be sure to mention you are with the Hoopa Hillclimb